



120


MARSHALLWHITE
ONE
101/120 Hotham Street
St Kilda East



Large and Light-Filled with a Carlisle Lifestyle

This exceptionally large and state-of-the-art, two bedroom apartment has spared no expense infusing a quality fit out to its vast, light-filled spaces, in a premium position with a Carlisle St lifestyle. Stone kitchen benches, Bosch appliances and striking glass splash backs make a compelling statement in style as the kitchen and huge open plan living open out to a broad balcony for an airy al fresco character that is bathed in northerly and westerly light. For a hint of luxury, the master bedroom has an ensuite and incredible floor-to-ceiling robes, whilst the building is secure with video entry, basement parking and elevator access. Additional features include a clever study nook with a built-in desk, a large European laundry and reverse cycle air conditioning. Just metres from one of Melbourne's most thriving strips of edgy cafes, bars, restaurants and independent retail, plus Balaclava Train Station and city-bound trams also running along Carlisle St.

101-120hothamstreet-stkildaeast.com

2 2 1

Auction Saturday 19th May at 10.30am

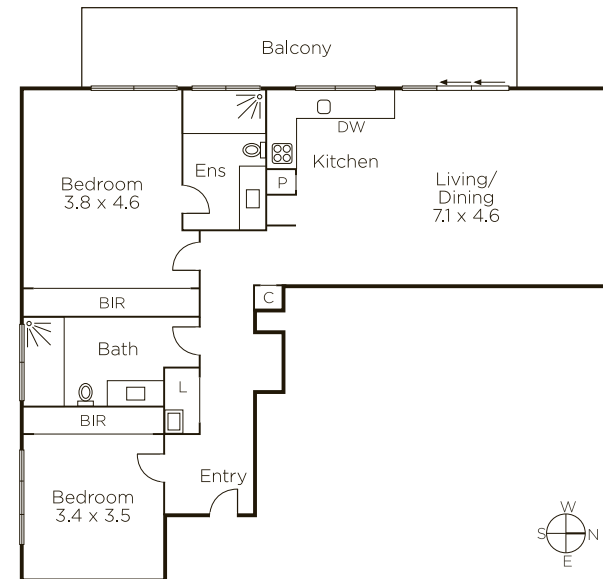
Joseph Ben-Danan 0408 135 948

Bradley Steinbach 0403 539 038

Sam Hobbs 0404 164 444

1111 High Street Armadale

9822 9999 mwone.com.au



MARSHALLWHITE
ONE

Disclaimer: Information provided is believed to be accurate as at the date of printing, no responsibility is taken for any errors or omissions. It is your responsibility to obtain independent, professional advice. Personal information collected from you is for security purposes to contact you should the property sell prior to auction. We may use this information to provide you with other real estate services including referrals to authorized financial services providers. Visit our website at www.mwone.com.au for our privacy policy.