



MARSHALLWHITE

10 Westgarth Street
Malvern East



Picturesque Family Perfection

In the Gascoigne Estate near Central Park, shops, cafes, trams & schools, the arresting first impression of this picturesque Edwardian residence gives just a hint of the beautiful blend of period elegance & contemporary style inside & the garden & pool surrounds. The hall introduces a refined sitting, study & spacious living/dining with premium marble kitchen opening to the private garden & pool. The main bedroom with en-suite is complemented by 3x additional bedrooms, 2x bathrooms & a retreat. Includes reverse cycle air conditioning, laundry, auto gates & 2x off street car spaces. Land size: 640sqm approx.

10westgarthstreet-malverneast.com

4 3 2

Auction Saturday 23rd June at 1pm

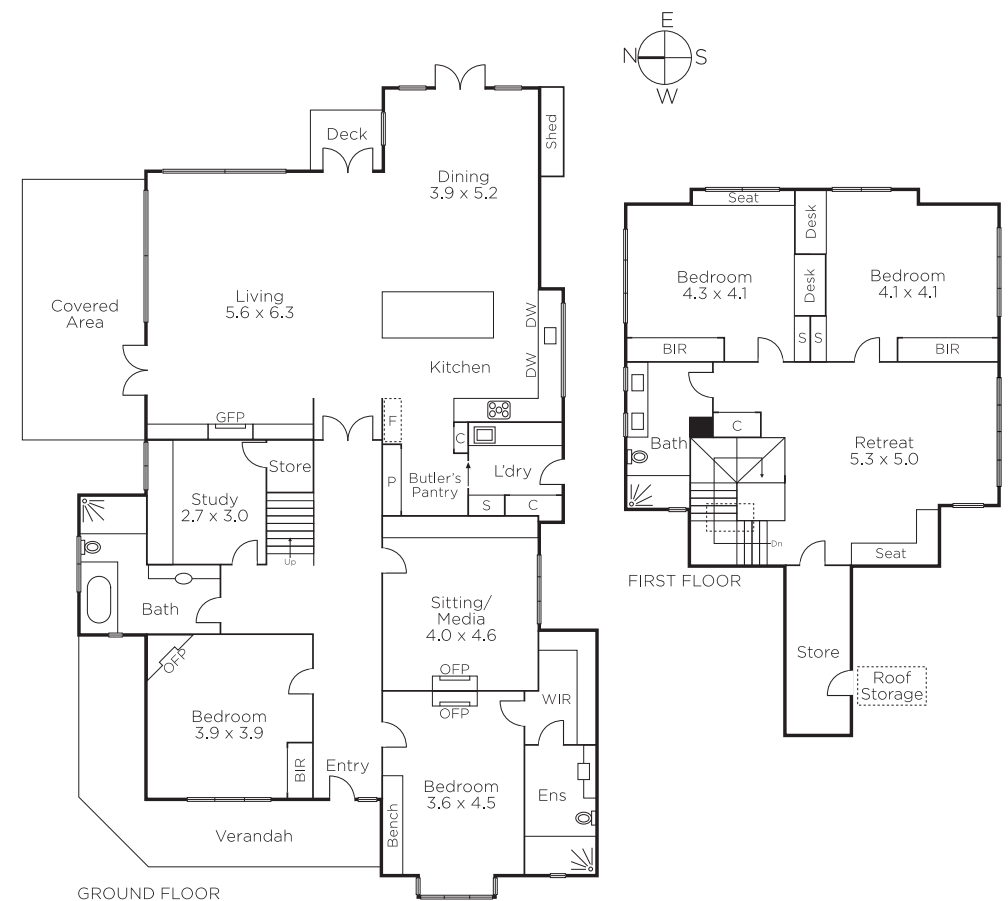
James Tomlinson
0408 350 684

Rae Tomlinson
0418 336 234

Hugh Tomlinson
0409 427 483

MARSHALLWHITE

1111 High Street, Armadale



Disclaimer: Information provided is believed to be accurate as at the date of printing, no responsibility is taken for any errors or omissions. It is your responsibility to obtain independent, professional advice. Personal information collected from you is for security purposes and to contact you should the property sell prior to auction. We may use this information to provide you with other real estate services including referrals to authorised financial services providers. Visit our website at www.marshallwhite.com.au for our privacy policy.