



MARSHALLWHITE

10 Norman Avenue
South Yarra



Impressive Elegance in Elite Setting

Nestled in a tightly held cul de sac, this splendid c1890's Victorian residence's impressive elegance and beautiful garden with pool setting delivers unbeatable lifestyle appeal near Toorak and Hawksburn Villages, Chapel St, trams and Hawksburn station. The wide hall introduces magnificent sitting room/3rd bedroom, formal dining, main bedroom with walk in robe and stylish en-suite, second double bedroom (robe) and bathroom. The living room, gourmet kitchen and conservatory dining open to a private west garden with pool. Includes alarm, irrigation, laundry, remote sun-awning, auto gate, carport and OSP.

10normanavenue-southyarra.com

2/3 2 2

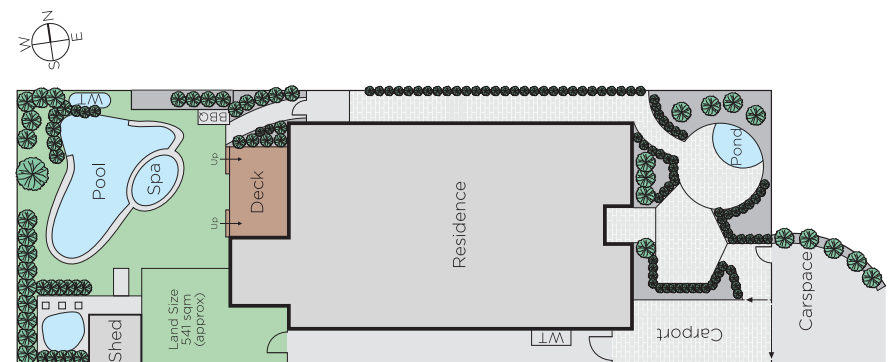
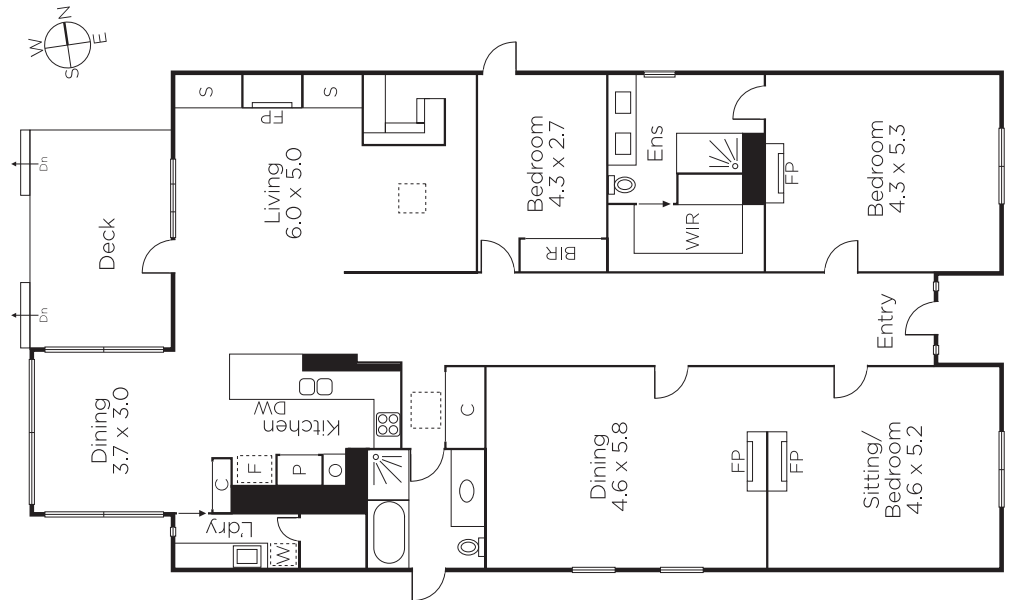
Auction Thursday 26th October at 6pm

David Volpato 0414 701 983

Andrew Hayne 0418 395 349

1111 High Street Armadale
marshallwhite.com.au


MARSHALLWHITE



Disclaimer: Information provided is believed to be accurate as at the date of printing, no responsibility is taken for any errors or omissions. It is your responsibility to obtain independent, professional advice. Personal information collected from you is for security purposes and to contact you should the property sell prior to auction. We may use this information to provide you with other real estate services including referrals to authorised financial services' providers. Visit our website at www.marshallwhite.com.au for our privacy policy.