



ST

10 MEADEN



MARSHALLWHITE

10 Meaden Street  
Ashburton





## Captivating Conversion, Inspiring Family Living

This rare c1953 Salvation Army Citadel conversion is the perfect juxtaposition of history and modern architectural design in one of Ashburton's most desirable positions. Comprising expansive open plan living/dining with GLFP, entertainers kitchen with Euro-appliances & WIP, study/office, three bedrooms including master with WIRs, ensuite & private courtyard, central bathroom with spa, alfresco entertaining area & established environs. Includes ducted heating & cooling, laundry, BIRs, water tank/irrigation, intercom, alarm, double garage with attic storage, cellar & secure OSP. Land 595sqm approx.

3 2 2

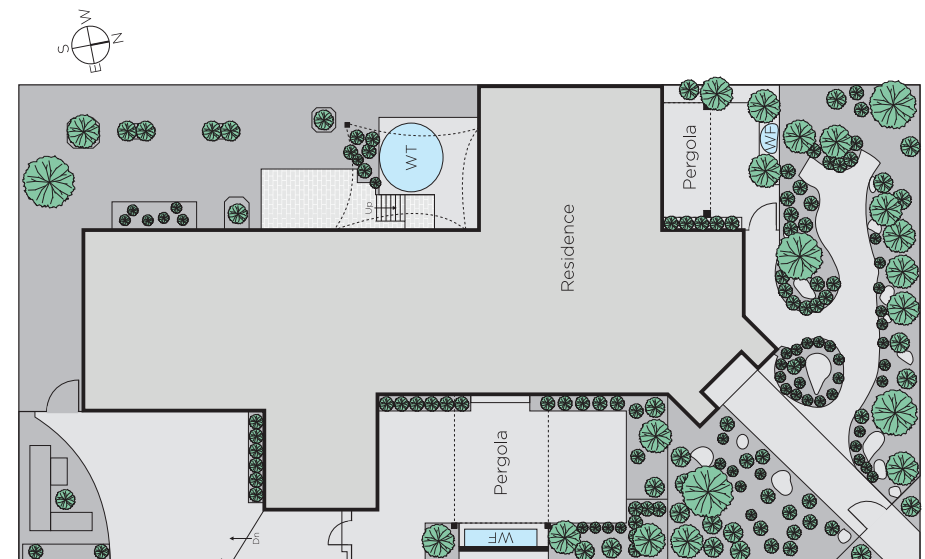
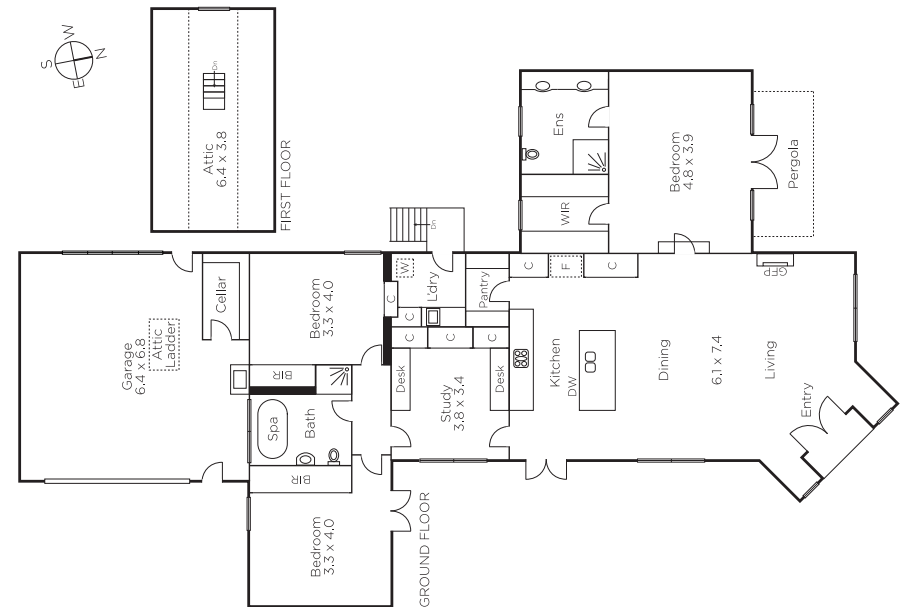
Auction Saturday 20th October at 1.30pm

**Todd Braggins**  
0424 552 238

**Zali Reynolds**  
0422 576 049

  
**MARSHALLWHITE**

801 Glenferrie Road, Hawthorn



Disclaimer: Information provided is believed to be accurate as at the date of printing, no responsibility is taken for any errors or omissions. It is your responsibility to obtain independent, professional advice. Personal information collected from you is for security purposes and to contact you should the property sell prior to auction. We may use this information to provide you with other real estate services including referrals to authorised financial services providers. Visit our website at [www.marshallwhite.com.au](http://www.marshallwhite.com.au) for our privacy policy.