



MARSHALLWHITE

10 Laxdale Road
Camberwell



Prized Position with Family Focus

Superbly combining period charm with modern comfort, the exceptional proportions of this brilliantly zoned c1926 residence on 905sqm approx. adapt effortlessly to every stage of family life. Rich period character defines the elegant sitting & formal dining rooms. The well-appointed modern kitchen & casual dining area flow into a generous living room opening out to the deep private garden. Four double bedrooms with BIR's & a large study are accompanied by two bathrooms. Close to shops, transport, parks & zoned to Hartwell Primary & Camberwell High Schools. Includes laundry, gym/studio & garage/work-shop.

4 2 2

Auction Saturday 20th October at 2:30pm

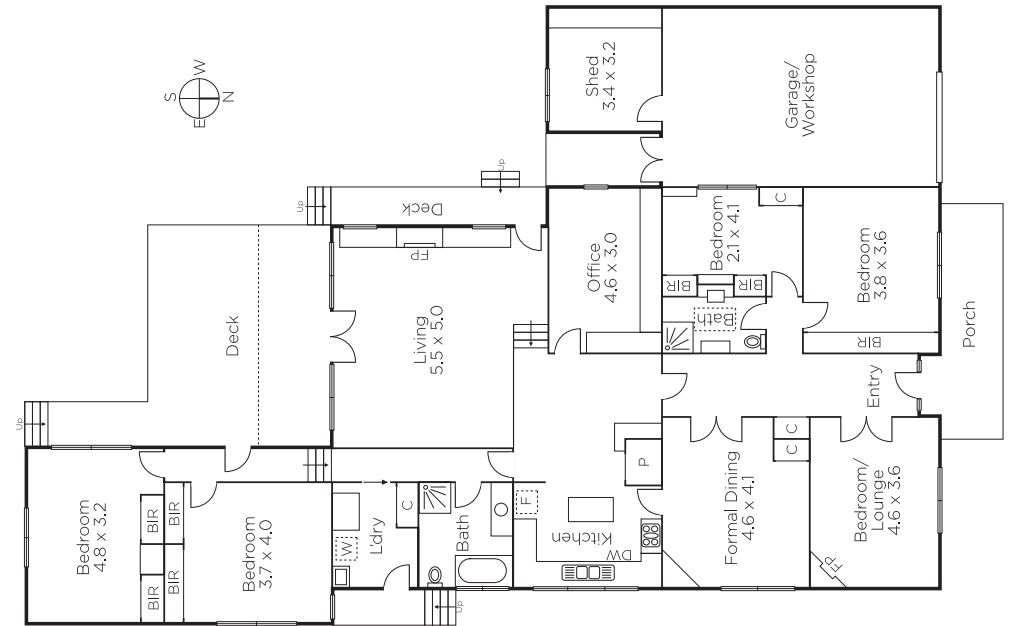
Kathy Malcolm
0416 279 966

James Tostevin
0417 003 333

Nicholas Franzmann
0412 247 175

MARSHALLWHITE

801 Glenferrie Road, Hawthorn



Disclaimer: Information provided is believed to be accurate as at the date of printing, no responsibility is taken for any errors or omissions. It is your responsibility to obtain independent, professional advice. Personal information collected from you is for security purposes and to contact you should the property sell prior to auction. We may use this information to provide you with other real estate services including referrals to authorised financial services providers. Visit our website at www.marshallwhite.com.au for our privacy policy.