




MARSHALLWHITE

10 Howe Crescent
South Melbourne



Sublime Victorian, c1890

A sanctuary of style with abundant natural light, this memorable c1890's block fronted Victorian retains all the allure of the era while revealing light-filled spaces ideal for modern living. The appeal begins with a classically elegant block fronted façade and traditional arched hallway with soaring ceilings, preceding two beautiful bedrooms, each with open fireplaces, the main with ensuite access to a bright spa bathroom. At the rear, a surprisingly broad, sun-drenched living/dining domain is accompanied by a granite kitchen and French doors that lead to a private garden. Potential parking via right-of-way. Attic store.

10howecrescent-southmelbourne.com

2 1

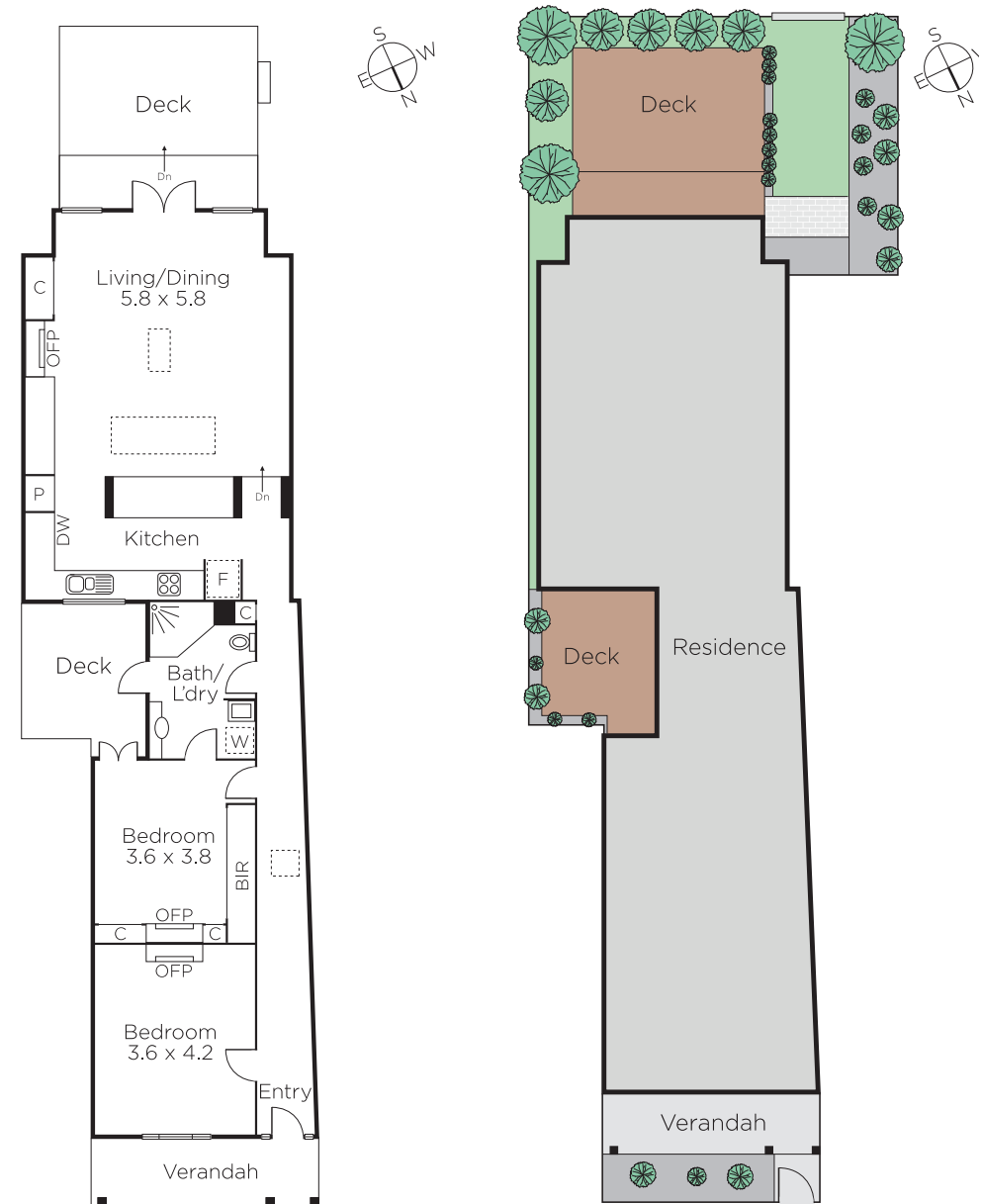
Auction Sunday 29th October at 1.30pm

Adrian Wood 0404 861 508

Sarah Carey 0420 246 200

101 Dundas Place Albert Park
marshallwhite.com.au


MARSHALLWHITE



Disclaimer: Information provided is believed to be accurate as at the date of printing, no responsibility is taken for any errors or omissions. It is your responsibility to obtain independent, professional advice. Personal information collected from you is for security purposes and to contact you should the property sell prior to auction. We may use this information to provide you with other real estate services including referrals to authorised financial services' providers. Visit our website at www.marshallwhite.com.au for our privacy policy.