



MARSHALLWHITE

10 Highgate Grove
Ashburton





"Glastonby"

Beautifully set within spectacular landscaped garden & pool surrounds, a striking architecturally designed renovation has totally transformed every dimension of this classic solid brick period residence. The stunning result is a stylish & spacious contemporary family domain enviably situated only metres from Ashburton Village, station, school & parks. A wide sky-lit hallway featuring Blackbutt timber floors introduces a captivating main bedroom with walk in robe & designer en-suite, two additional double bedrooms with built in robes, study or 4th bedroom, lavish bathroom & an inviting sitting room or retreat with gas fireplace. High ceilings accentuate the sense of space in the expansive living & dining room with a streamlined gourmet European kitchen appointed with stone benches & fitted study nook. Large glass sliders open fully to a fabulous covered al fresco dining terrace & the picturesque private northwest garden with heated pool. Completed only 3 years ago, this impressive home also includes plantation shutters, alarm, RC heating/cooling, irrigation, powder-room, laundry, water tanks, auto gates & carport. Land size: 767sqm approx.

10highgategrove-ashburton.com

4 2 2

Auction Saturday 17th February at 9.30am

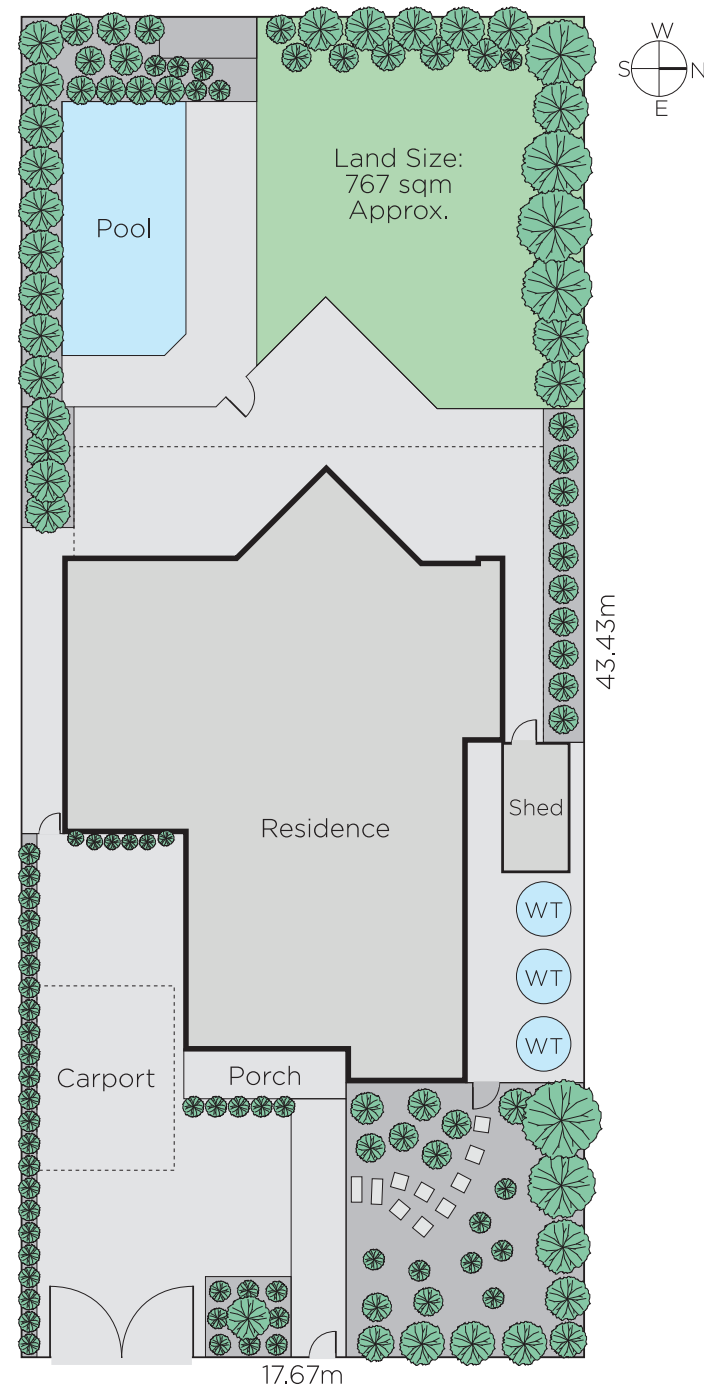
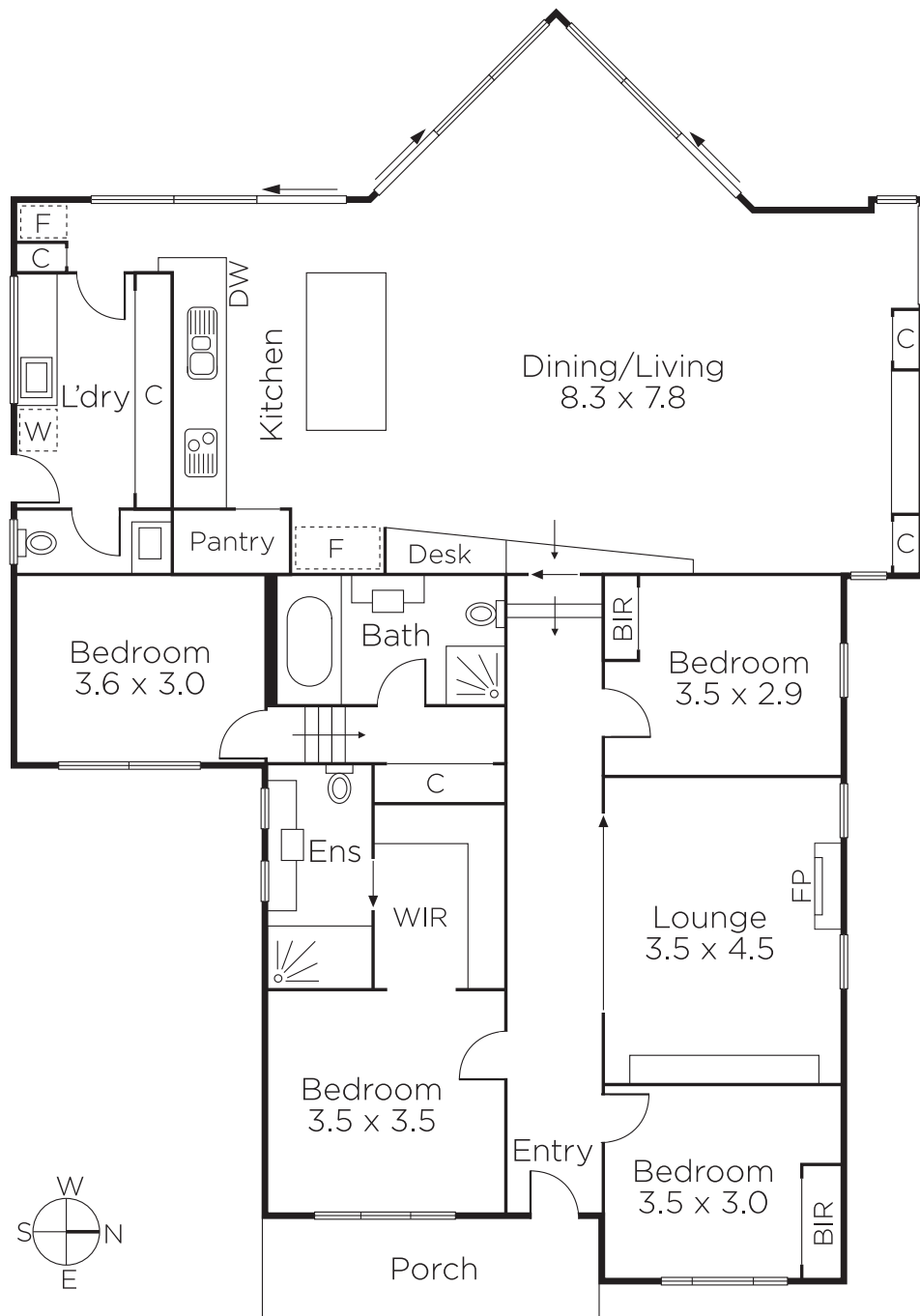
Jason Brinkworth
0416 006 282

Justin Krongold
0403 163 355

Daniel Wheeler
0411 676 058


MARSHALLWHITE

1111 High Street, Armadale



Disclaimer: Information provided is believed to be accurate as at the date of printing, no responsibility is taken for any errors or omissions. It is your responsibility to obtain independent, professional advice. Personal information collected from you is for security purposes and to contact you should the property sell prior to auction. We may use this information to provide you with other real estate services including referrals to authorised financial services' providers. Visit our website at www.marshallwhite.com.au for our privacy policy.