



MARSHALLWHITE

10 Emily Street
Brighton



Emily's had a face lift!

Be captivated by the new look and original beauty of this double fronted Victorian home. This is the perfect address for walking to nearby Church St, trains, Brighton Primary School and Brighton Grammar. Two living areas and three bedrooms offer room for single-level downsizing or young families, and a renovated kitchen shines bright with natural light, Smeg appliances and integrated Hafele refrigeration. Unique right of way rear access, study zone, flat-weave 100% wool carpet, hydronic heating, and plantation shutters make for stylish easy living. Potential to further extend with approved planning permit.

10emilystreet-brighton.com

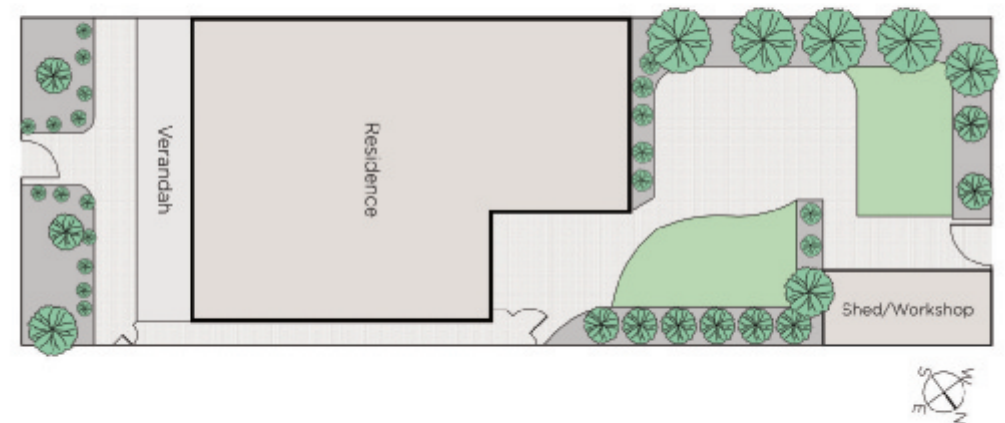
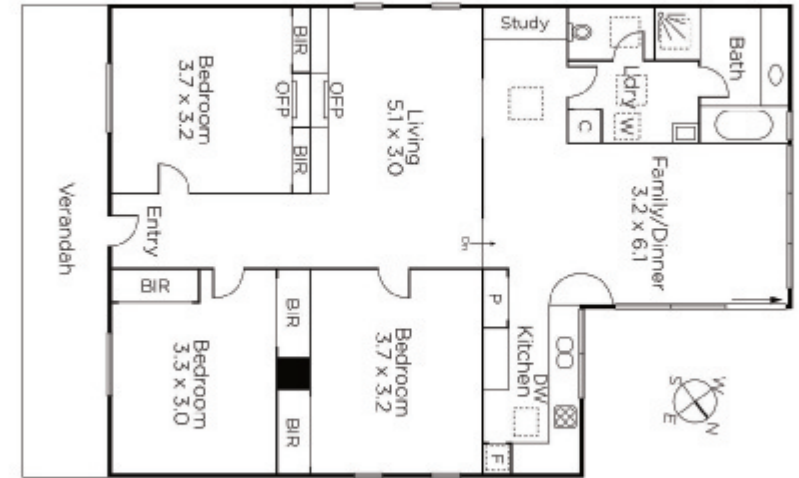
3 1

Auction Saturday 14th April at 12.30pm

Barb Gregory
0419 568 370

Alyce Fleming
0499 082 614

Simone Tindall
0408 330 355




MARSHALLWHITE

225 Bay Street, Brighton

Disclaimer: Information provided is believed to be accurate as at the date of printing, no responsibility is taken for any errors or omissions. It is your responsibility to obtain independent, professional advice. Personal information collected from you is for security purposes and to contact you should the property sell prior to auction. We may use this information to provide you with other real estate services including referrals to authorised financial services providers. Visit our website at www.marshallwhite.com.au for our privacy policy.