



  
MARSHALLWHITE

10 Eileen Street  
Armadale





## "Rosemont"

Captivating Victorian cul-de-sac residence with elegant dimensions and north-facing outdoor environs create a wonderful sanctuary near Beatty Ave Village, Toorak station and schools. An arched hallway introduces a gorgeous sitting room and formal dining room with open fires. Timber floors flow through the spacious north-oriented living/dining room and gourmet kitchen opening to a landscaped private north garden. The main bedroom with open fire and balcony is accompanied by a two additional bedrooms, a stylish bathroom and powder-room. Includes hydronic heating, zoned air conditioning and double carport.

10eileenstreet-armadale.com

3 2 2

Auction Saturday 6th May at 12.30pm

Richard Mackinnon 0414 822 579

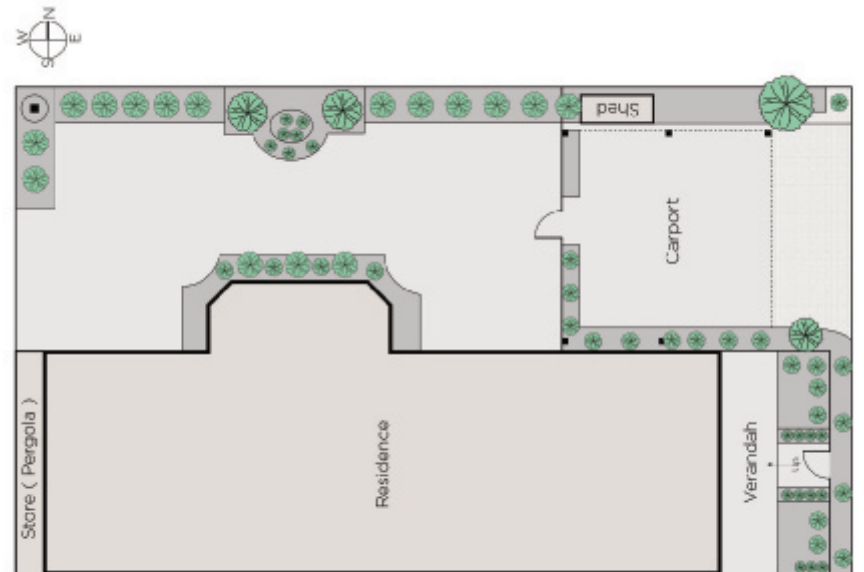
Celeste Wright 0413 309 002

In Conj with: Bill Hegarty 0418 891 890

1111 High Street Armadale

marshallwhite.com.au

  
MARSHALLWHITE



Disclaimer: Information provided is believed to be accurate as at the date of printing, no responsibility is taken for any errors or omissions. It is your responsibility to obtain independent, professional advice. Personal information collected from you is for security purposes and to contact you should the property sell prior to auction. We may use this information to provide you with other real estate services including referrals to authorised financial services' providers. Visit our website at [www.marshallwhite.com.au](http://www.marshallwhite.com.au) for our privacy policy.