



906sqm
(approx.)



MARSHALLWHITE

1 Selwyn Court
Toorak



Exciting Opportunity in Elite Cul De Sac

Defined by gracious proportions & a north-facing 906sqm approx. garden setting in an exclusive cul de sac, this refined 1960's residence delivers immediate family appeal plus scope to rebuild as a new home or development near schools, Kooyong Village, Heyington station, trams & freeway access (STCA). The foyer introduces a formal dining room, magnificent sitting room, gourmet kitchen with casual dining area & a living room opening to the garden. Two double bedrooms with en-suites are complemented by three additional bedrooms, bathroom & study. Includes alarm, irrigation, laundry, auto gates & double carport.

1selwyncourt-toorak.com

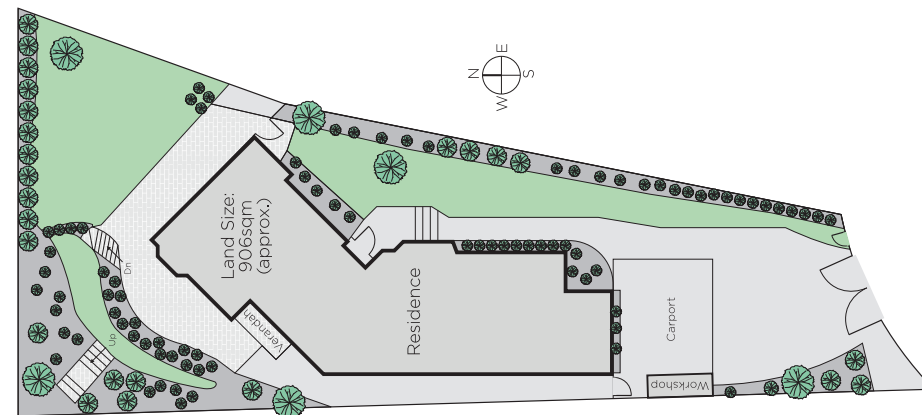
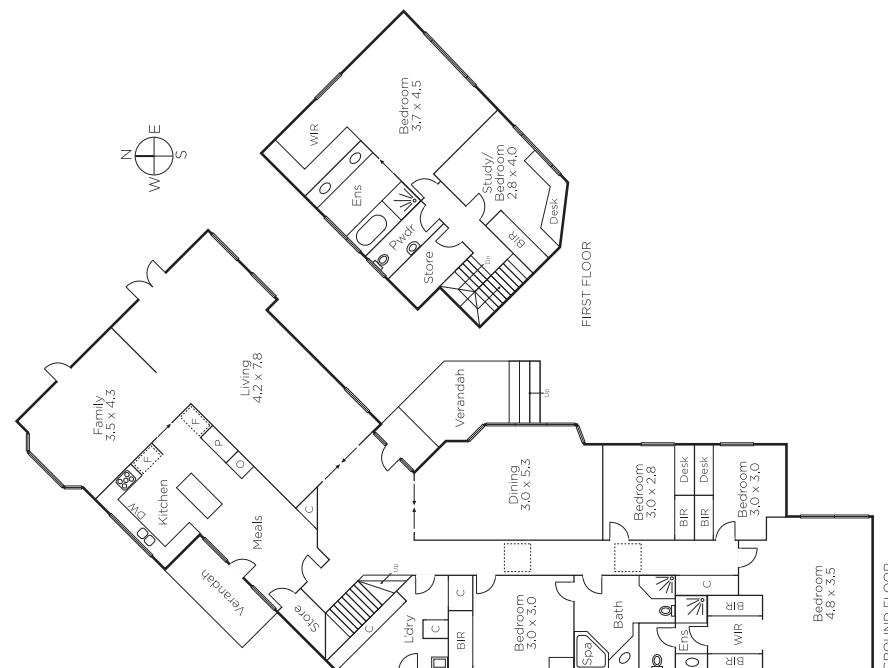
5 3 2

Auction Saturday 16th June at 12.30pm

Joanna Nairn
0419 994 664

John Manton
0411 444 930

Michael Martin
0478 011 216



MARSHALLWHITE

1111 High Street, Armadale

Disclaimer: Information provided is believed to be accurate as at the date of printing, no responsibility is taken for any errors or omissions. It is your responsibility to obtain independent, professional advice. Personal information collected from you is for security purposes and to contact you should the property sell prior to auction. We may use this information to provide you with other real estate services including referrals to authorised financial services providers. Visit our website at www.marshallwhite.com.au for our privacy policy.