




MARSHALLWHITE

1 Page Avenue
Port Melbourne



Prominent Corner Position

Behind the classic Bank House façade, this captivating c1940's residence's pairing of original charm with modern style has created a fabulous family domain set within sensational private northwest garden and pool surrounds. Generous proportions define the light-filled sitting room, study, expansive living/dining room and gourmet kitchen opening to the private northwest garden and heated pool. Four double bedrooms with built in robes are complemented by a study nook and stylish bathroom. Close to the beach, Garden Reserve, transport and schools, it includes powder-room, Euro-laundry and irrigation.

1pageavenue-portmelbourne.com

4 1

Auction Saturday 17th March at 1pm

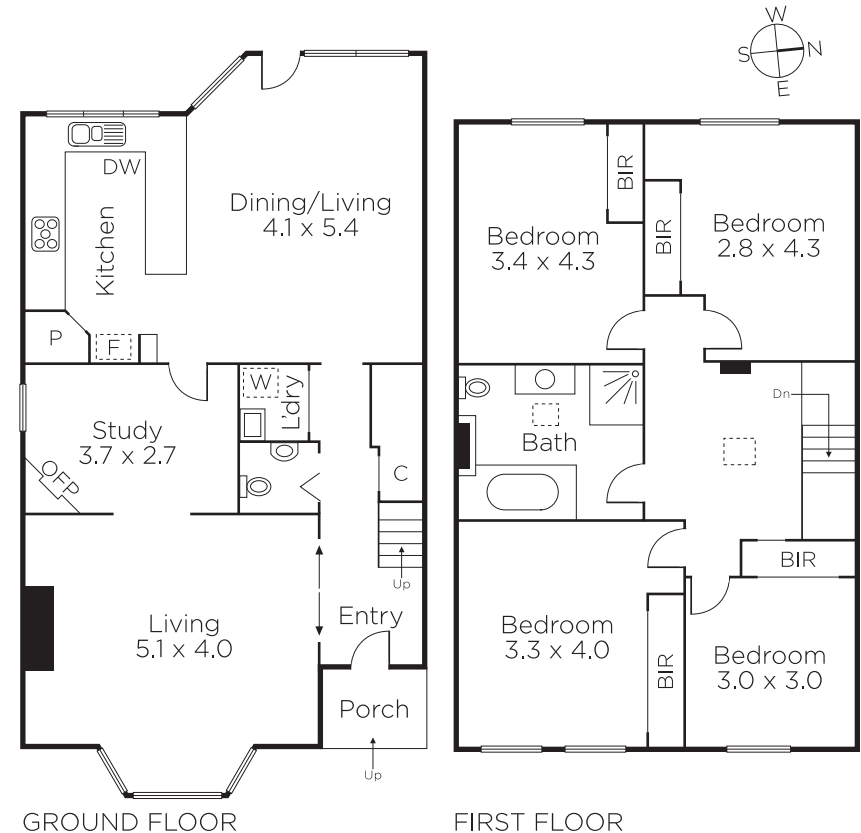
Justin Holod
0411 669 161

Sarah Wood
0408 902 827

Georgia Whitford
0434 827 563


MARSHALLWHITE

101 Dundas Place, Albert Park



Disclaimer: Information provided is believed to be accurate as at the date of printing, no responsibility is taken for any errors or omissions. It is your responsibility to obtain independent, professional advice. Personal information collected from you is for security purposes and to contact you should the property sell prior to auction. We may use this information to provide you with other real estate services including referrals to authorised financial services providers. Visit our website at www.marshallwhite.com.au for our privacy policy.