



Kathy Malcolm 0416 279 966
kathy.malcolm@marshallwhite.com.au

Antony Woodley 0421 286 741
antony.woodley@marshallwhite.com.au

801 Glenferrie Road, Hawthorn 3122




MARSHALLWHITE

1 Nyorie Court,
Ivanhoe



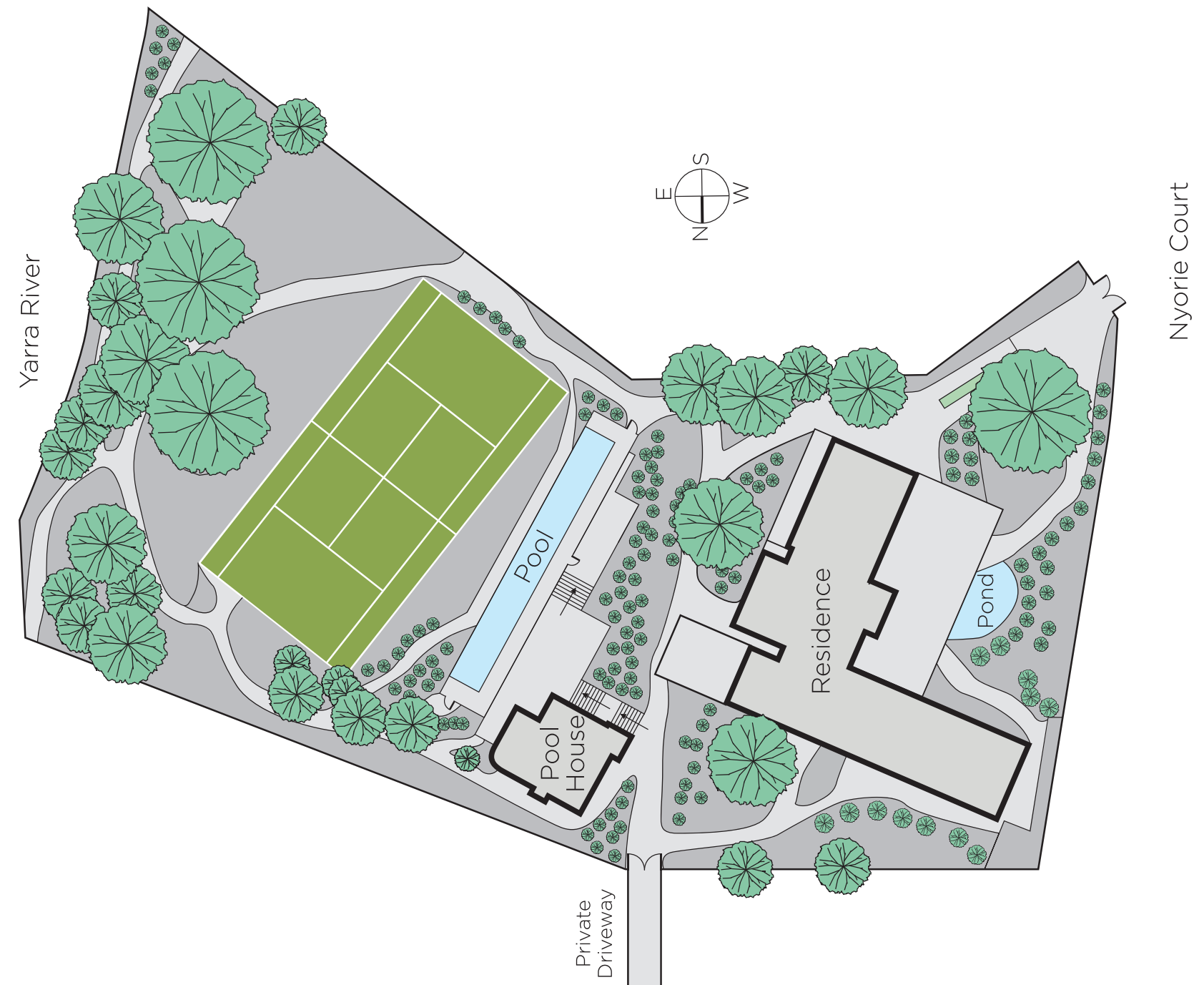
A timeless masterpiece of contemporary architecture, this spectacular riverfront residence set within award winning gardens with pool and tennis court enjoys breathtaking Yarra River views. The result of an inspired collaboration between architect Lindsay Davis and landscaped designer Robert Boyle, it provides an unforgettable private urban sanctuary. Behind the imposing stone façade, the impressively proportioned sitting and formal dining rooms and home theatre command panoramic river views. On its own level, an opulent main bedroom suite with gym, study, dressing room and luxurious en-suite also enjoys wonderful views. A children's wing comprises three large double bedrooms with ensuites and built in robes. Flowing down to the Yarra River, the magnificent gardens encompass a 25m heated lap pool, mod-grass tennis court and 2-storey pool/guest house. Comprehensively appointed with a lift, 2 laundries, 3000 bottle wine cellar & 3-car garage. Land size: 4440sqm approx.

Expressions of Interest
Closing Tuesday 28th November at 5pm
1nyoriecourt-ivanhoe.com



Opening to an expansive terrace overlooking the river, the inviting living/dining area is served by a sublime Gaggenau stone kitchen.





Disclaimer: Information provided is believed to be accurate as at the date of printing, no responsibility is taken for any errors or omissions. It is your responsibility to obtain independent, professional advice. Personal information collected from you is for security purposes and to contact you should the property sell prior to auction. We may use this information to provide you with other real estate services including referrals to authorised financial services' providers. Visit our website at www.marshallwhite.com.au for our privacy policy.