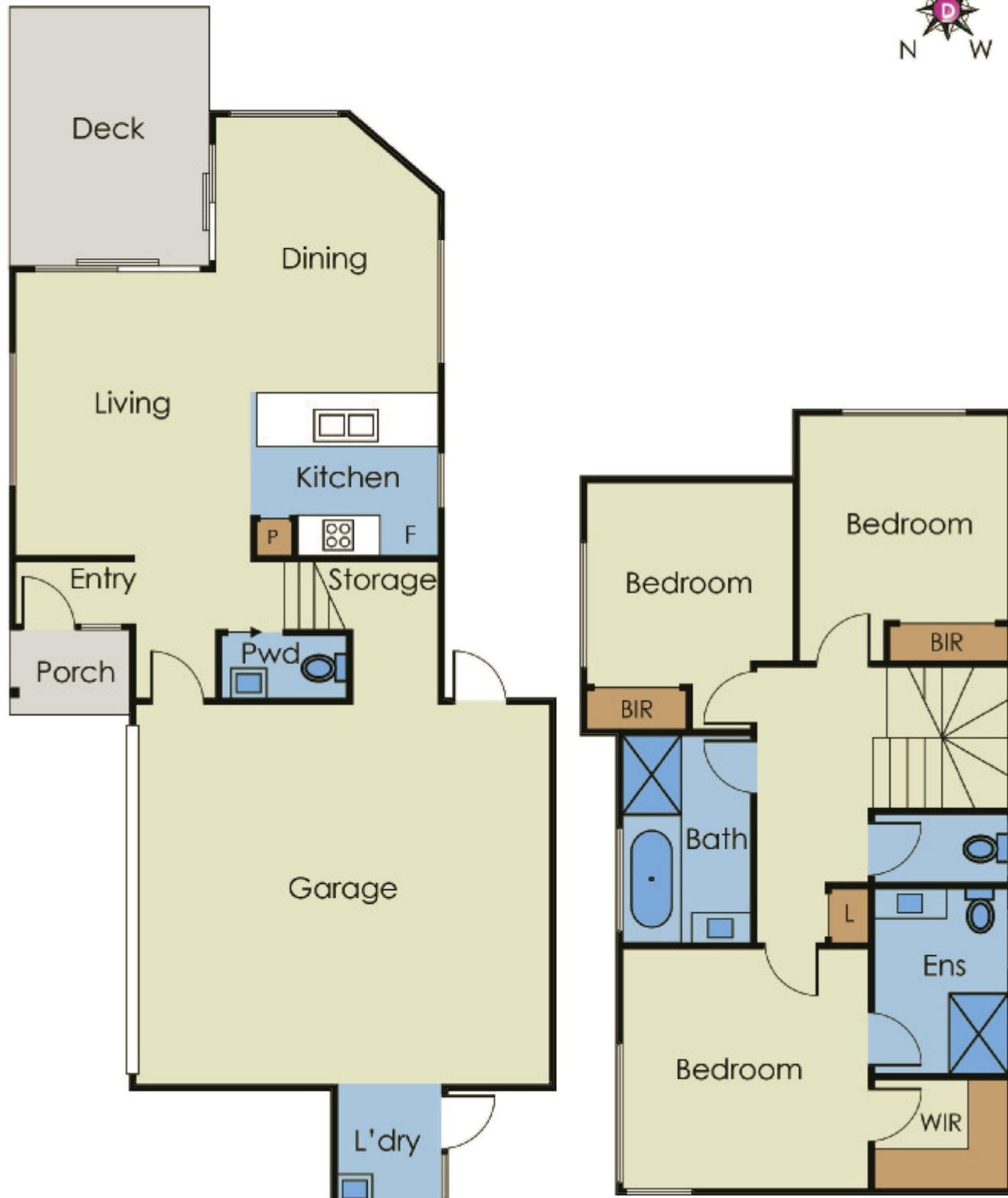


U5_1318-1320 Nepean Highway, Cheltenham



Bold Beachside Design ...Pre-Purchase Now

3/4 2+ 2

Fronting Booker St on a "private court", the latest release from boutique builders, MK Building Group offers bold brand-new value in a high-amenity beachside position - a jog to the bay & minutes to Southland between stations & latte locations. Offering a range of 3 & 4 bedroom, 2-plus bathroom accommodation sized from 156sqm to 176sqm, each home will feature a Smeg kitchen, luxe bathrooms (with at least 1 ensuite), Quantum Quartz benchtops, mirror splashbacks & (all except 1) private double garages. Due for completion mid 2018, it's time to get ahead of the beachside market & secure your bold design now!

Features

Choice of 5 beachside home to pre-purchase now, completion mid 2018, sized 156sqm to 176sqm, Smeg kitchen, ensuites, garages

www.1-5-1318-1320.nepeanhwycheltenham.com

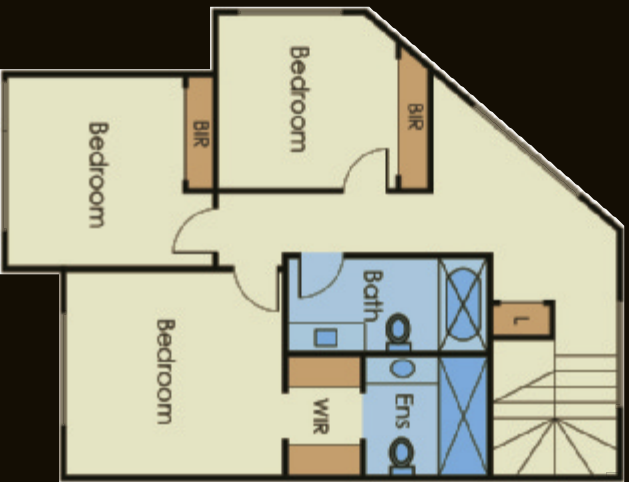
Contact Wesley Belt 0418 310 753

wbelt@buxton.com.au

Zac Damiani 0411 898 185

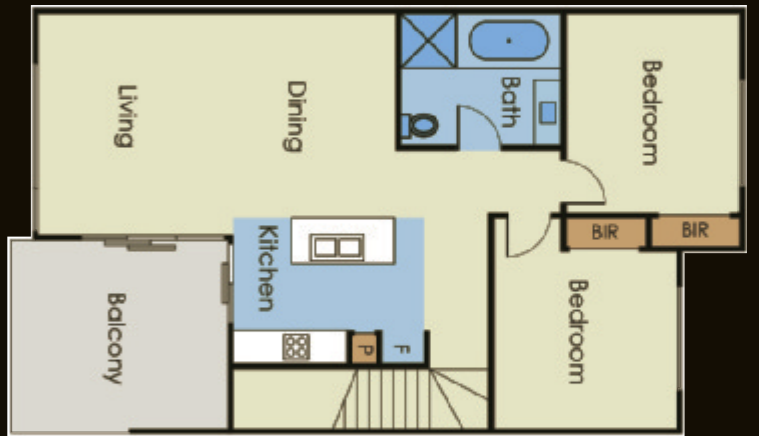
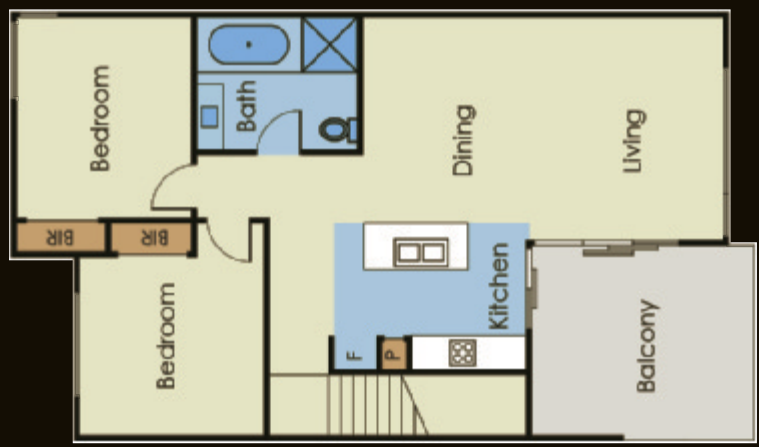
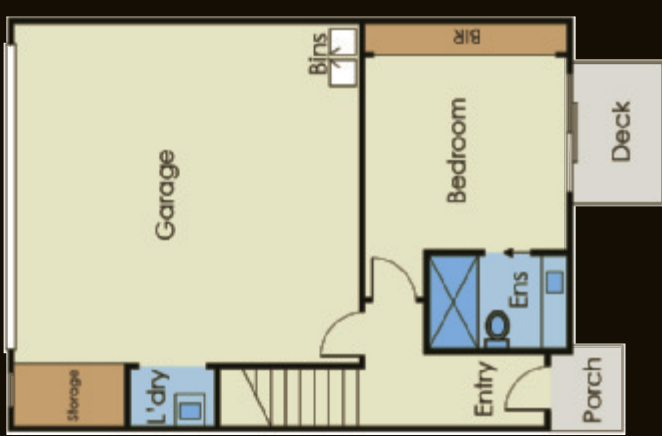
zdamiani@buxton.com.au

Office Mentone 9583 9811



U1_1318-1320 Nepean Highway, Cheltenham

U3_1318-1320 Nepean Highway, Cheltenham



U2_1318-1320 Nepean Highway, Cheltenham

U4_1318-1320 Nepean Highway, Cheltenham

